

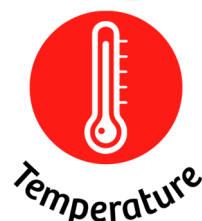


# CALIBRATION BATHS BLACK BODY CAVITY READY

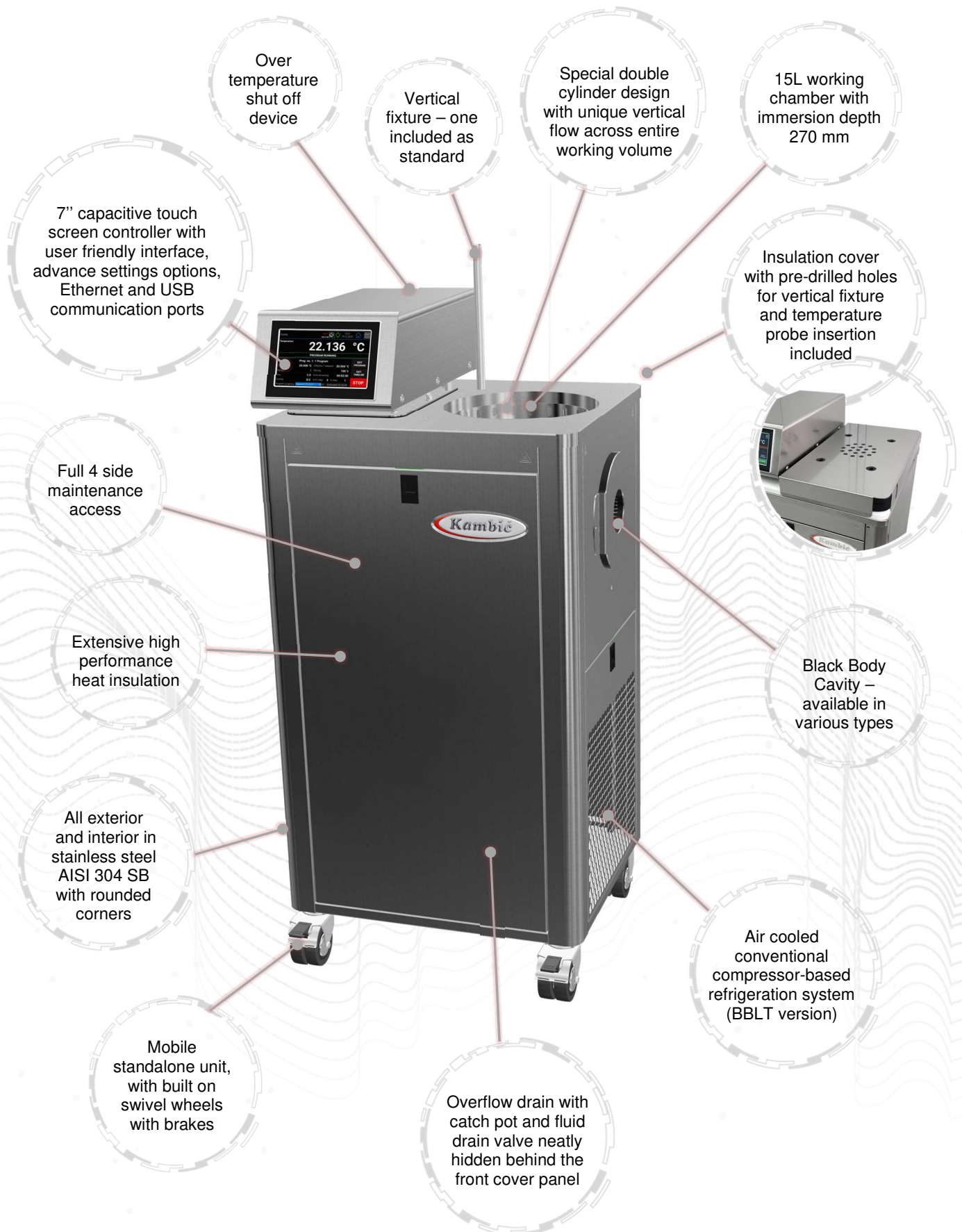
**OB-15/2 BB** (+ 40 °C ...+ 250 °C)

**OB-15/2 BBLT** (- 20 °C ...+ 130 °C)

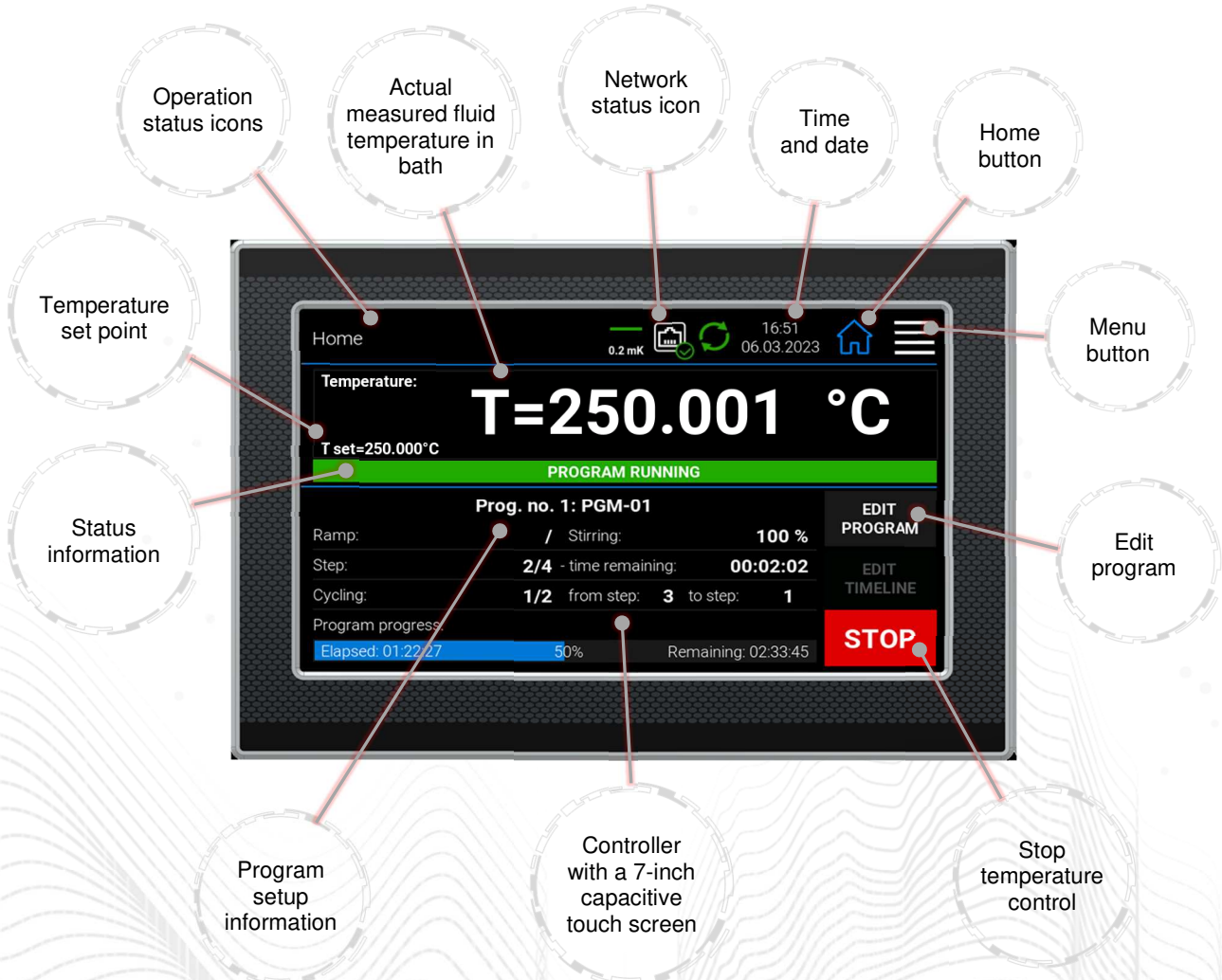
- Special calibration baths - metrology performance
- Perfect solution for calibrating IR thermometers and other thermographic equipment
- Various shapes Black Body Cavities available
- Uniformity and stability in mK range
- Fluid ensures perfect heat transfer
  - Unique vertical flow design
  - Two temperature ranges
  - State of the art solution



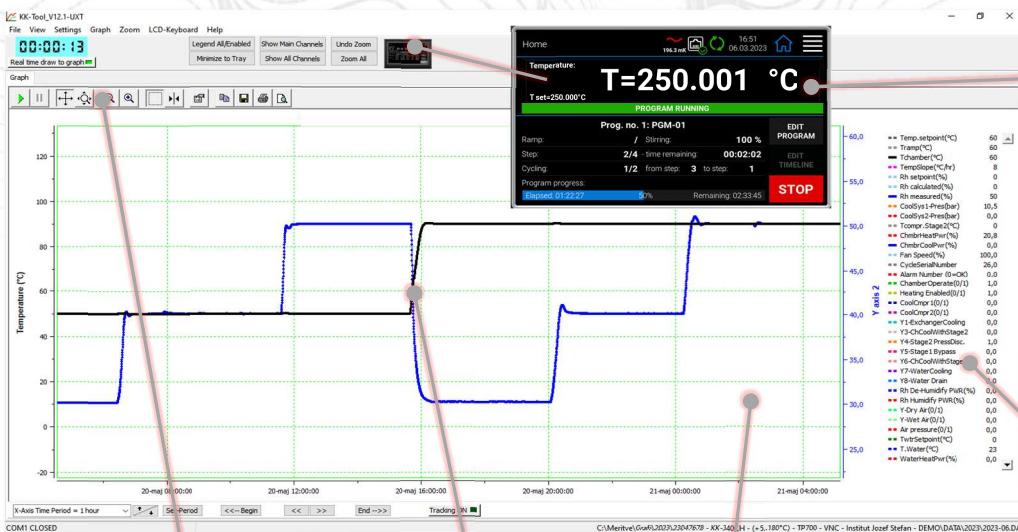
**Device description:**





**Touch display with advanced controller functions:**



**OB-Tool software for PC (free – included with every unit):**



## Technical data:

	<b>OB-15/2</b>	<b>OB-15/2 BBLT</b>
		
External dimensions (WxHxD) [mm]	530 x 1090 x 470	530 x 1090 x 470
Internal dimensions (diameter x immersion depth) [mm]	Ø 225 x 270	Ø 225 x 270
Volume [L]	~ 15	~ 15
Fluid quantity for operation [L]	20	20
Temperature range [°C]	+ 40 ... + 250	- 20 ... + 130
Temperature display resolution [°C]	0.001	0.001
Temperature set resolution [°C]	0.001	0.001
Temperature stability [°C]	± 0.003 @ 100 °C	± 0.006 @ - 20 °C ± 0.005 @ 0 °C ± 0.003 @ 100 °C
Temperature uniformity [°C]	± 0.007 @ 100 °C	± 0.007 @ -20 °C
Heating rate	~ 1 hour (+ 40 °C ...+ 100 °C)	~ 1 hour (+ 20 °C ...+ 100 °C)
Cooling rate	N/A (natural cooling)	~ 0,5 hour (+ 20 °C ...- 20 °C)
Temperature Control	PID	PID
Noise level [dBA]	< 48	< 58
Cooling	Natural cooling	Compressor Cooling System
Power supply	230 V 50/60 HZ (± 10 %)	230 V 50/60 HZ (± 10 %)
Wattage [W]	1100	2500
Interface	Ethernet, USB	Ethernet, USB
Weight [kg]	~ 63	~ 88

*\*All performance in controlled environment (Tambient = 22 °C ± 3 °C)!*

*\*Accessories might affect performance!*

*\*OB-15/2 BB performance data with fluid KDC 200.50*

*\*OB-15/2 BBLT performance data with fluid KDC 200.05*

*\*All the specifications are related to the bath and the fluid (not to the Black Body Cavity)*

## Accessories:

- LIG thermometer holder



- Vertical fixture



- Adjustable multiple probe fixture



- External fluid level for LIG



- Additional lid



- Removable shelf



- Fume hood



- Evaluation report

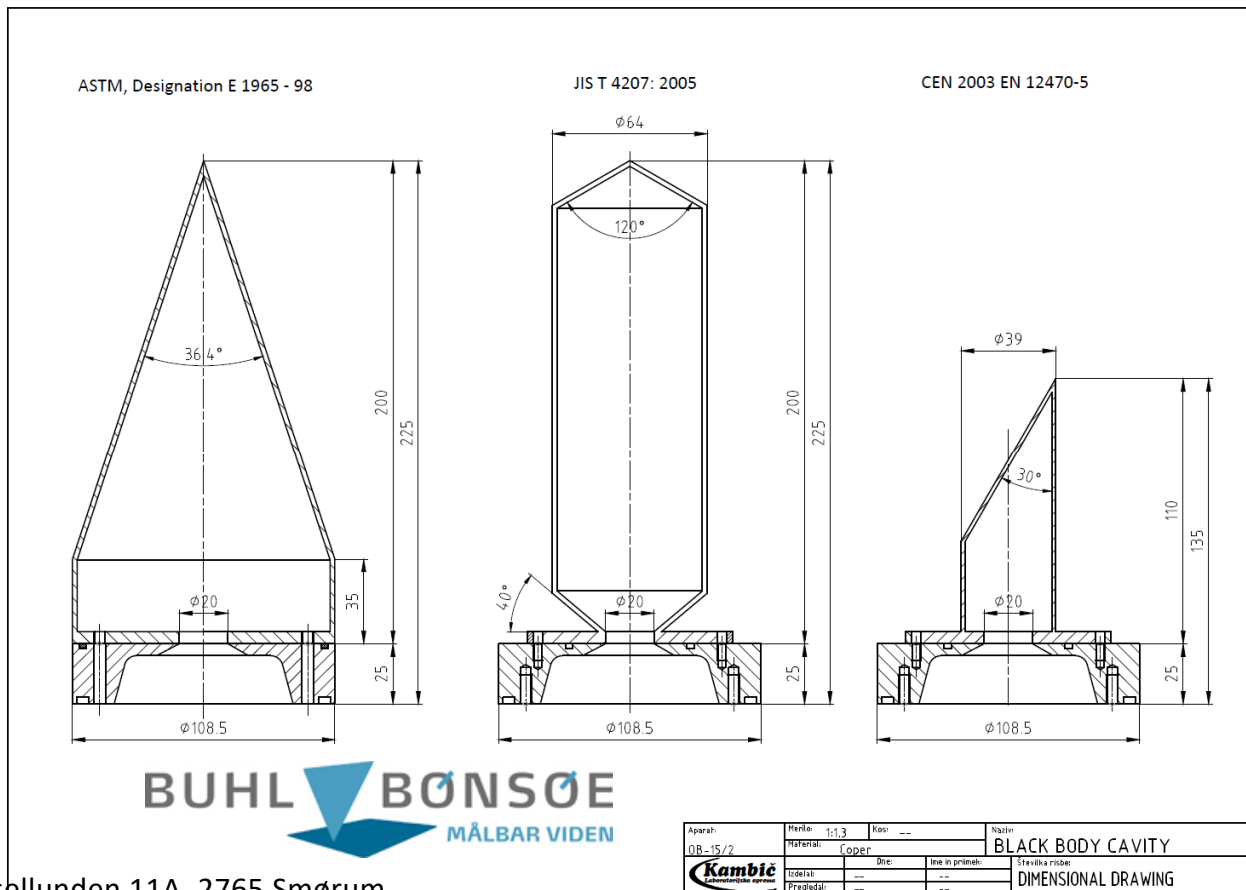
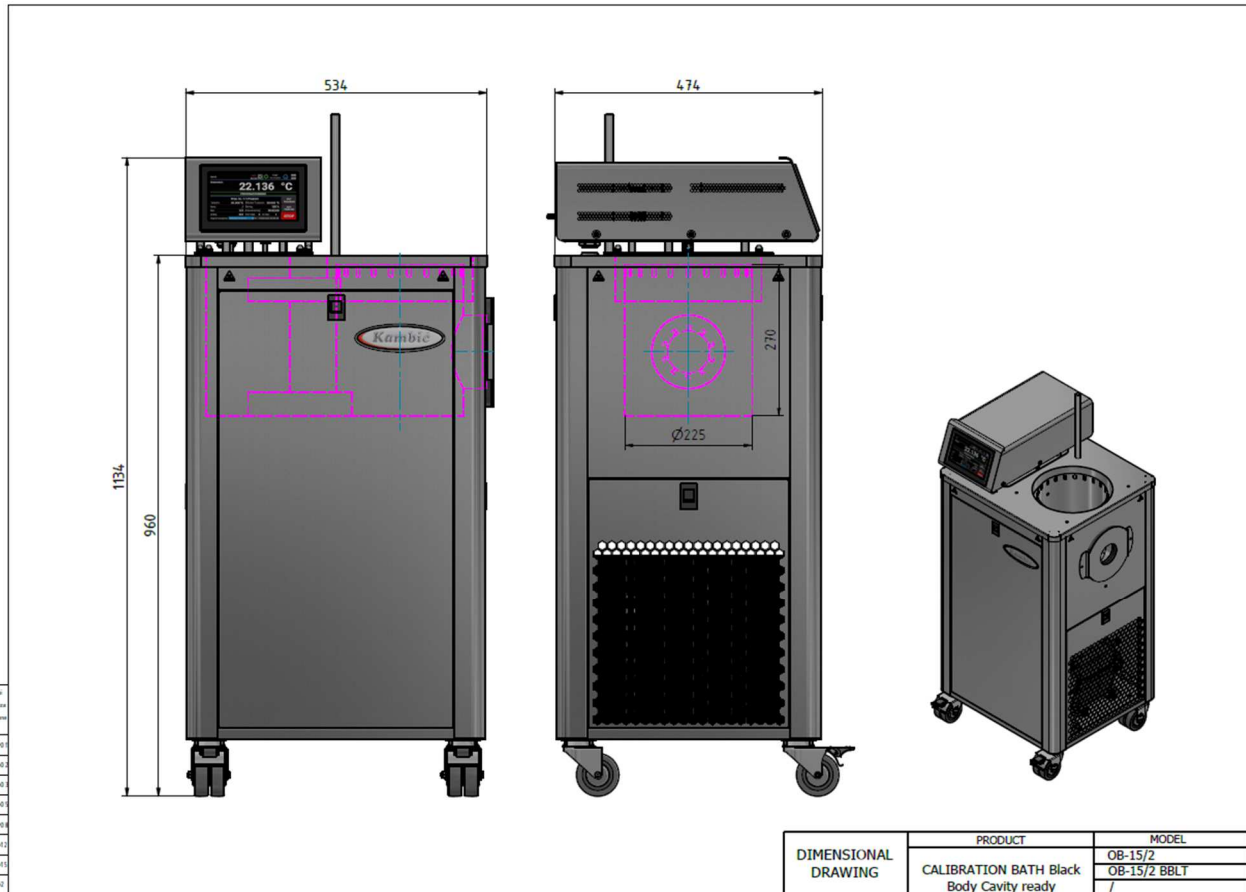


## Ordering information and accessories:

Description	Part no.
Calibration bath OB-15/2 BB	1623
Calibration bath OB-15/2 BBLT	1624
Black Body cavity ASTM standard (horizontal insertion flange)	1654
Black Body cavity JIS T standard (horizontal insertion flange)	1661
Black Body cavity CEN EN standard (horizontal insertion flange)	1660
Black Body cavity CN standard (horizontal insertion flange)	2931
Black Body cavity EXERGEN standard (horizontal insertion flange)	2932
Black Body cavity ASTM standard (vertical insertion flange)	2975
Black Body cavity JIS T standard (vertical insertion flange)	2976
Black Body cavity CEN EN standard (vertical insertion flange)	2977
Black Body cavity CN standard (vertical insertion flange)	2978
Black Body cavity EXERGEN standard (vertical insertion flange)	2979
Black Body cavity Combo (two bodies on one flange - vertical insertion)	/
Evaluation report – performed by Kambič	1719
Evaluation report (accredited ISO/IEC 17025:2017)	1777
External fluid level for LIG	1655
Vertical fixture	1657
Adjustable multiple probe fixture	1733
LIG (liquid in glass thermometer) fixture	1735
Local fume hood with fan	1656
Removable shelf	1658
Black body mounting flange cover (for operating without black body cavity)	2118
Extra lid for OB-15/2	2116
Extra side insulation lid for OB-15/2	2117
Silicone oil fluid KDC 200.50 (+ 30 °C ...+ 278 °C)	631
Silicone oil fluid KDC 200.05 (- 40 °C ...+ 130 °C)	645

*\*Black Body Cavity is not included with the base unit. It has to be ordered separately!*

*\*Accessories might affect performance!*



Hassellunden 11A, 2765 Smørum  
 Tel. 45 95 04 10  
 info@buhl-bonsoe.dk  
 www.buhl-bonsoe.dk

Kambič d.o.o. Metliška cesta 16, SI-8333 Semič, Slovenia - EU,  
 T: +386 (0)7 35 65 220, info@kambic.com, info@kambicmetrology.com  
 www.kambic.com, www.kambicmetrology.com